

P Squared Ltd

Myriad v2.6

Daylight Savings Settings Addendum

Document last updated 10/05/2004

© 2004 P Squared Ltd

Dealing With Daylight Saving Time Changes In Automated Programs

If you are using Myriad in a country that operates different time standards in Summer and Winter, then twice a year the clocks will either jump forward by an hour or repeat the same hour twice to switch between the two time standards.

In the UK, the winter months are covered by GMT while the summer months use BST which is an hour ahead of GMT. In practice this means that at the end of each March, the clocks jump from 1am to 2am on the last Sunday of the month and repeat the 1am hour on the last Sunday of October to switch back to GMT.

This has a number of implications for any station-using Myriad to run automated programs particularly if the automated programming includes 'running to time' for external events such as satellite news.

Unfortunately, there are a number of factors that can influence when your Windows™ actually changes the time on your PC, which means that it is very hard to predict the exact sequence of events and plan accordingly.

Before you get started, double click on the clock in the bottom right hand corner of the Windows™ start bar (or sys tray), click on the Time Zones tab and un-tick Automatically Adjust Clock For Daylight Saving.



The best thing to do in both of the time switches is to not attempt to 'run to time' or take any external timed events such as news for a couple of hours either side of the switch. That way, should Windows™, the Atomic Clock (a radio controlled clock used for accurately setting time) or the system bios disagree on exactly when to change the time or cause the time to jump around for a while (both of which we have seen in the past), Myriad should be just fine if you follow the following instructions.

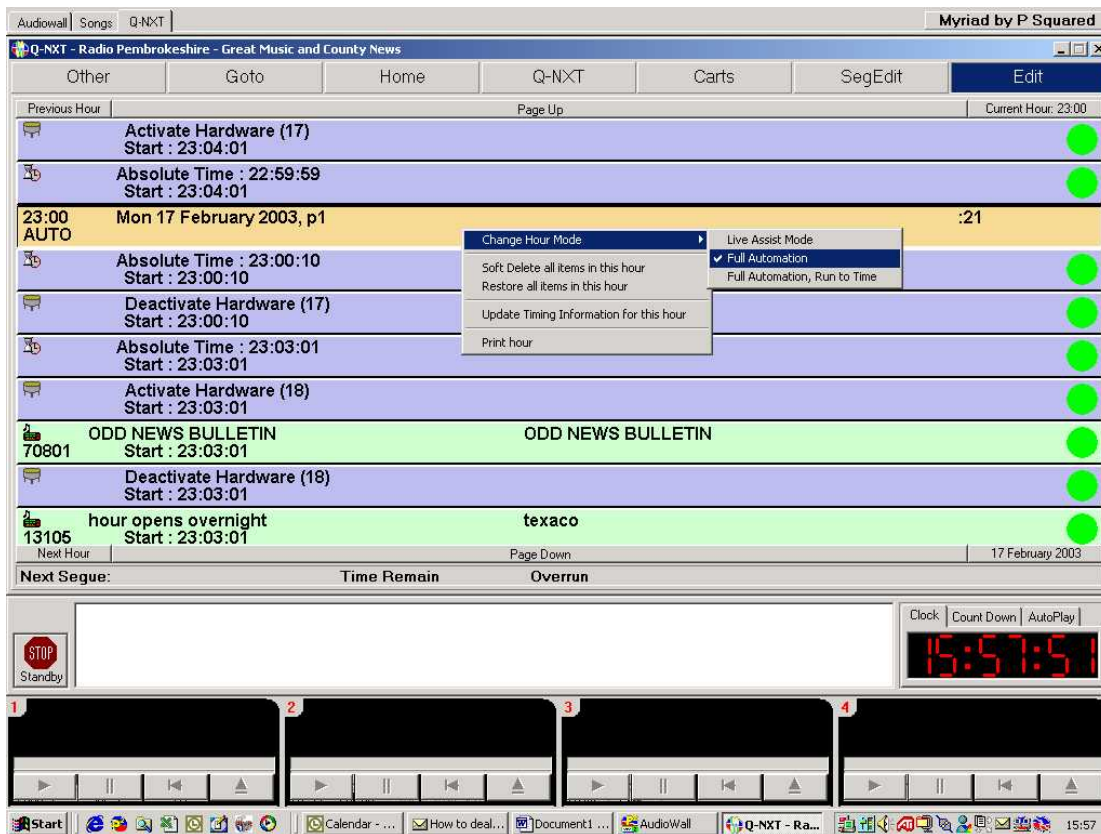
GMT to BST (End Of March) – Clocks Go Forward (less time in bed)

The time will jump forward by an hour at 2(ish) am effectively meaning that an hour of automated programming will be missed.

Of the two time changes, the clocks going forward is least likely have a serious affect on your automated output. If no action is taken, the system will run normally to around 2am and then the clock will jump forward to 3am. At this point, Myriad will believe that it is overrunning by 1 hour and will proceed to drop all the songs from the 2-3am hour. It can not drop jingles, promos, voice links or protected songs however, so these will play ensuring that the next news break is also missed.

The best way around this is to schedule as normal but once your log has been 'pushed' to Myriad, go in to the log on the Q-NXT screen and go to 1am on the morning of the time change.

Find the Hour Start marker for the 1am hour and right click on it. Expand the Change Hour Mode option and select Full Automation (not Full Automation, Run To Time) from the list. This tells Myriad not to attempt to back time this hour of automation.



Next click on the Next Hour button, which will jump you on to the next Hour Start marker (2am) and repeat the above process to switch that hour to Full Automation mode also.

Repeat one more time with the 3am hour.

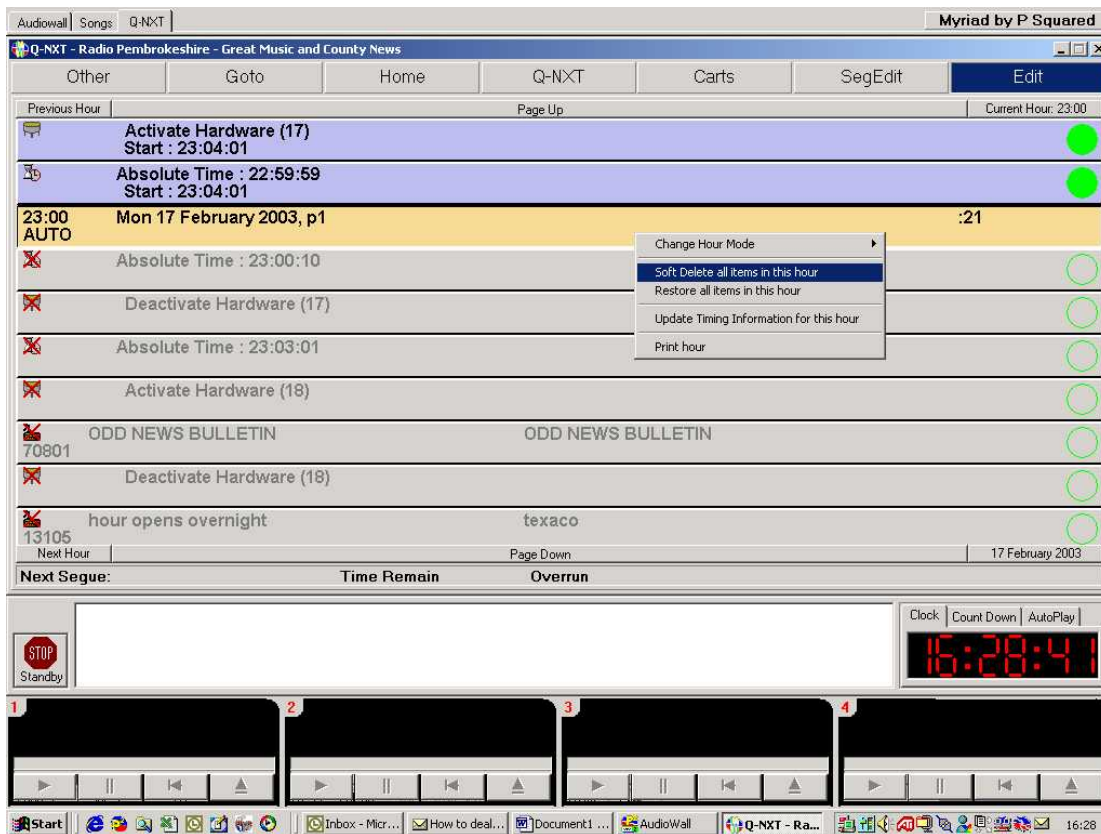
Myriad will now not attempt to 'run to time' between 1am and 4am, which should easily cover the time change. But the commands to switch IRN are still in the log so unless we take them out, then news will still be switched on but at the wrong time.

Go back to the start of the 1am hour and then go back in to the end of the 12am hour and find the hardware event that switches on the news. Right click on this item and select Delete > Permanently Delete from the menu. If you do not do this then the news will be switched on at the end of the 12am hour and not switched off again until 4am.

Now scroll down the hardware event at the beginning of the 1am hour and remove it in the same way. Repeat for all the hardware events between 1am and 4am to ensure that during this time, Myriad does not attempt to switch any external hardware.

Tip: Use the Start Hour / Next Hour buttons to jump to the Hour Start markers for each hour.

We should now not have any hardware events from just before 1am through until 4am and Myriad will not attempt to alter these hours to run to time, but we still have an hours too much programming so the final thing that we need to do is to go the start of the 2am hour and remove all of the music, jingles, voice links and promos for the hour. You can do this by right clicking on each item in the hour and selecting Delete from the right click menu. You could also click on the item type icon (left hand side picture icon) for each item to soft delete it (a red cross appear through the icon and the item turns grey) but the simplest way is to right click on the Hour Start marker for 2am and select Soft Delete All Items In Hour from the menu.



This will soft delete each item in the 2am to 3am hour.

That's it, you are now ready for the clocks going forward. It is a bit of work but at least it only happens twice a year.

You could also achieve the above by adjusting the clocks in AutoTrack™ or Selector™ accordingly but then you would have to make sure that you altered them back before the following weekend.

If you do not take an automated news feed overnight then you may prefer to switch off daylight savings in Windows™, unplug your radio clock and let Myriad run normally, blissfully unaware of the injustices of a world where you get an hour less in bed just so the farmers can get the tractors out on the roads extra early to hold up even more people.

BST to GMT (End Of October) – Clocks Go Back (more time in bed)

As the autumn nights pull in and the leaves start to fall from the trees, the demise of summer is sweetened a little by the magic weekend at the end of October where BST switches back to GMT and you get a full extra hour in bed.

But, the cosmos must balance. For every right there is a wrong, for every ying, there is a yang and while you are tucked up in bed dreaming of a Utopian society where dog and sheep work hand in hand and marmalade is freely available on the NHS, your poor Myriad system has had it's hardest night of the year and without your help, may be on the verge of a nervous break down.

You see, the clocks going back is the hardest situation for Myriad to deal with effectively so it is best for us to make it as easy on the system as possible by taking the following steps.

As with the change from GMT to BST (above) it is not really practical to take external news feeds during the time change period as Windows™, the PC bios and Atomic Clocks do not always agree on when exactly the time change occurs so it is best to give it a wide berth and assume that you will not take news from 1am to 4am. That way you can be sure that all the changes have occurred and the system is back on track by the time your early shift arrives.

The first thing to do is to go to the Hour Start marker for each hour (1am – 3am) and use the right click menu to change the Playout Mode to Full Automation (not Full Automation, Run To Time). This tells Myriad to ignore the time markers in each hour. The reason we only do 1am, 2am and 3am is that this will take us to 3:59am and the 4 am hour wants to run normally so we leave it alone.

Tip: You can use the Start Hour / Next Hour buttons to jump to the next Hour Start marker without having to scroll through the log.

The next thing that we need to do is to remove the Hardware Events between 1am and 4am to stop Myriad switching any external sources such as satellite news. To do this, go back to the 1am Hour Start marker and then scroll back in to the end of the 12am hour and right click on the Hardware Event that switches the news on just before 1 o'clock. Select Delete Permanently from the right click menu to remove the hardware item. This is important because if you remove the Hardware Event that turns that news off after the 1 o'clock break but do not remove the Hardware Item that turns it on then the news may well be stuck on for several hours.

You need to remove all of the hardware events between 1am and 3:59am to in the same way to ensure Myriad does not switch any external sources during the time change.

Finally, we need to add around 15 extra songs to the 2am hour to effectively make it a 2-hour show. The simplest way to do this is to find the 2am hour in the Q-NXT log and drag some songs in from the Audio Wall in to the log. If you do not have a dual screen system then clicking on the Carts button on Q-NXT will open the Cart Browser which can be used to drag songs from the Audio Wall to the Q-NXT Log.

Tip: There is an upper limit to how many items can be inserted in to a single slot in the Q-NXT log so you may find it better to spread the load a little by dragging 2-4 items in to one place in the log, then moving down a couple of songs and doing it again.

Once you are happy that your 2am hour has sufficient program content to have a total running duration of 2 hours then you are ready. Because Myriad is not running to time, it will play all of the items in the log regardless of whether the show over runs so it does not matter if the actual time change happens at 2am (as it is supposed to) or 3am because overall the system will just play songs and jingles until 4am by which time, everything should be back on track and ready to run as normal.

If you do not fancy messing around in the Q-NXT log then you can always change the clocks in either AutoTrack or Selector™ to achieve the same net result but you would have to remember to alter them back before the next weekend.

Alternatively, you could disable the running to time and the Hardware Events, then turn off daylight savings in Windows and unplug your Atomic clock and just let Myriad run through the night and deal with it in the morning!

The above examples are based on the UK daylight savings model but the same method is applicable to any time changes, regardless of when they occur.