

Setting Up Selector To Export Myriad Format Files

Caution: This should only be done by P Squared engineers or by people familiar with both Myriad and Selector.

This document is designed to allow you to set up your Selector system to output a program schedule in a format that Myriad can use. It does not attempt to explain how this is done or why we have had to do thing in this way, for more details you should consult either a P Squared engineer (for Myriad questions) or RCS (for Selector questions).

1. Before you get started, ensure that the P squared Log Importer utility is installed on the PC you want to use (usually the same PC as Selector is on) and that if you want to import the logs directly in to Myriad, that it has a valid network path to your Myriad System directory.
2. Next locate the following files.

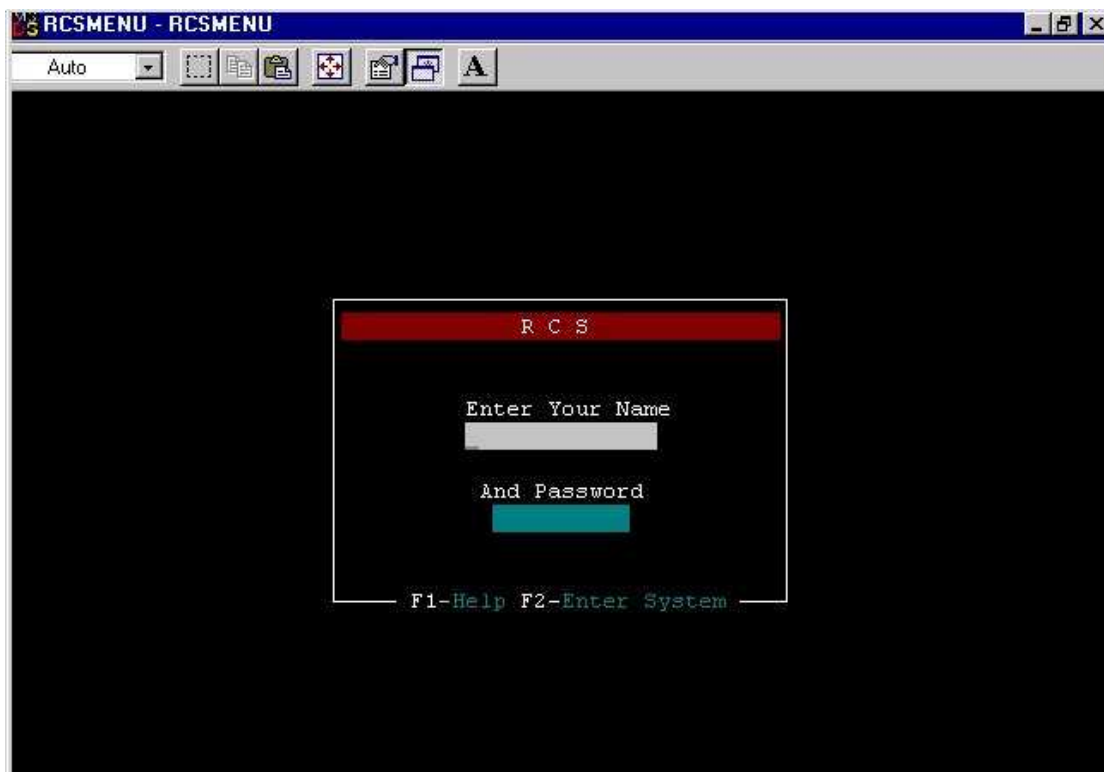
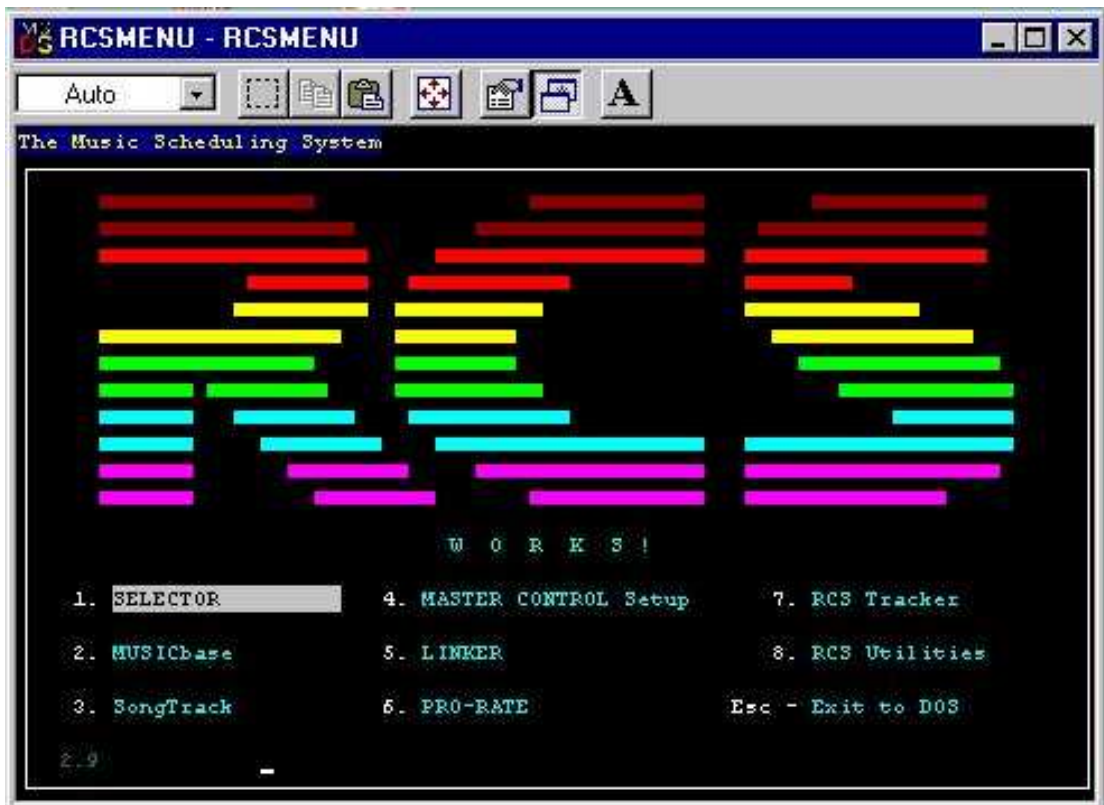
12LOG08.RCS
& 12LOGE08.RCS

These files are supplied by P Squared and have been specifically designed to replace files of the same name in your RCS Selector system. These files should have been copied in to the same location the Log Importer utility when P Squared installed it. Alternatively the files can usually be found in the following folder on your Myriad Installation CD.

D:\Myriad \Importers + Utilities\Music\RCS
(assuming D drive is your CD ROM)

Once you have located the files copy them to the computers 'clip board' by either using the right click menu or pressing the CTRL + C keys on the keyboard.

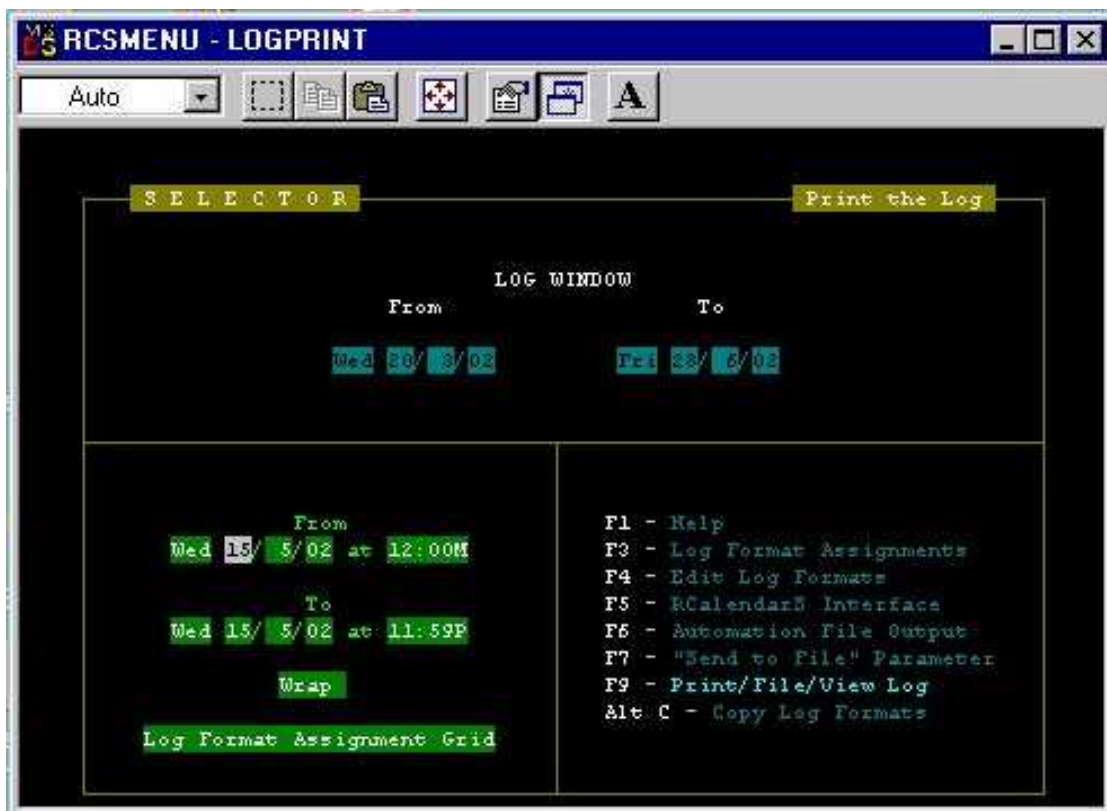
3. Using Window Explorer, locate the folder that your RCS Selector system operates from. This is often C:\RCS\SELECTOR folder. You know that you have the correct folder if you see the 12LOG08.RSC file already in place in the folder; this is one of the files that we are going to replace in a few moments.
4. Rename the 12LOG08.RSC file that is in the Selector file to 12LOG08.OLD. Do the same for the 12LOGE08.RCS file if it exists.
5. Paste in the new P Squared versions of the files by using CTRL + V or the Paste option on the right click menu.
6. Run Selector and log in to the system.



7. From the main menu in Selector, select Print The Log by pressing 7 on the keyboard or using the cursor keys.



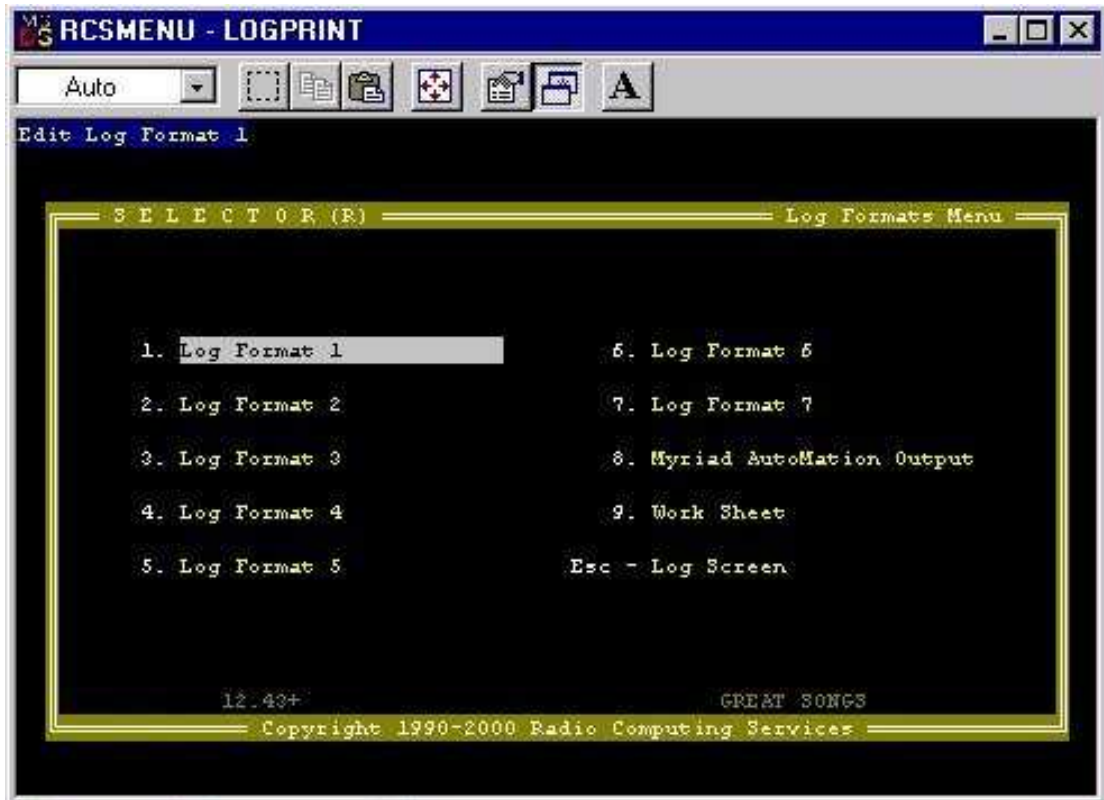
8. This will open the Print The Log Screen.



Press the TAB key on the keyboard until the Log Format Assignment Grid is highlighted, then press the SPACE BAR until the Myriad Automation Output option is highlighted.



9. Press F4 to enter the Edit Log Formats screen.

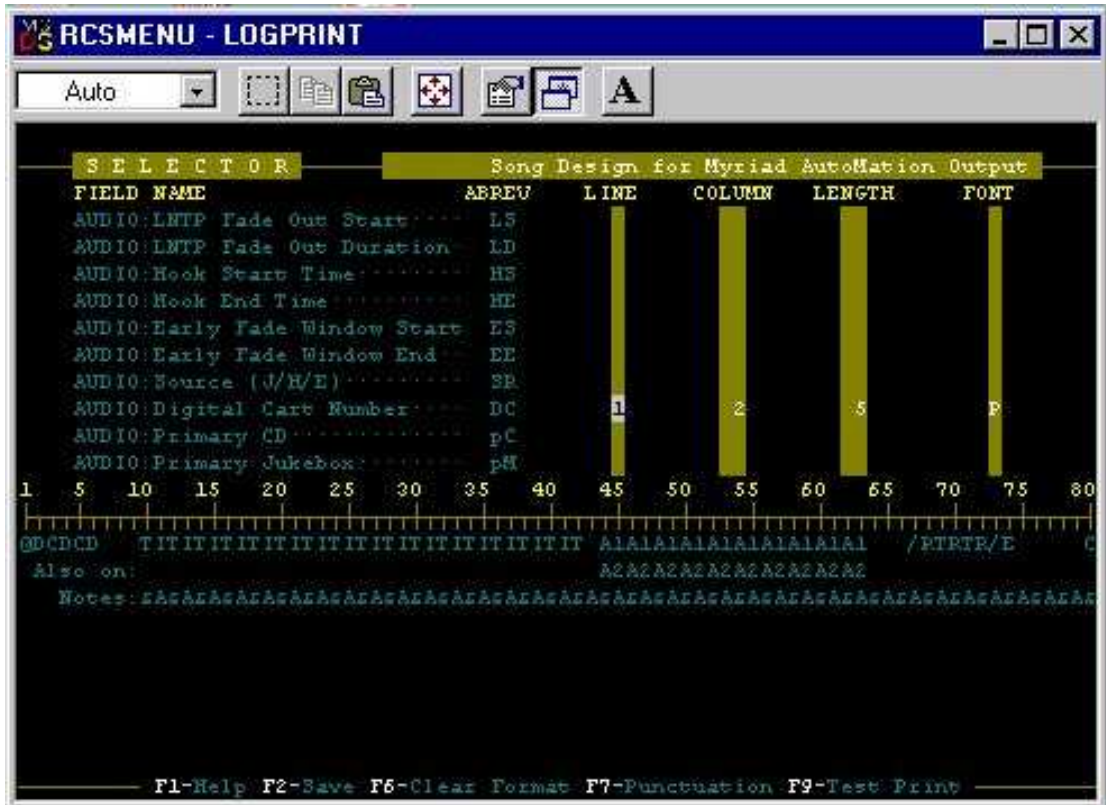


Press the 8 key to select the Myriad Automation Output or use the cursor keys to highlight it and press Enter.

10. In the next window, press 1 to select Song Design option.



- This is the section of Selector that allows you to layout the format of the file that Selector generates to give to Myriad. Most of the settings are already set and YOU SHOULD NOT MESS WITH THEM. The exception to this is the field that tells Myriad which Cart Number to play for a given song or jingle. By default, this is the Song ID field in Selector so if the person that has been adding the Myriad Cart Numbers to the Selector system has been using the Song ID field in Selector then you do not have to change anything in here. If not then you will need to change the output format to put the Cart Number in the right place in the file Selector outputs.



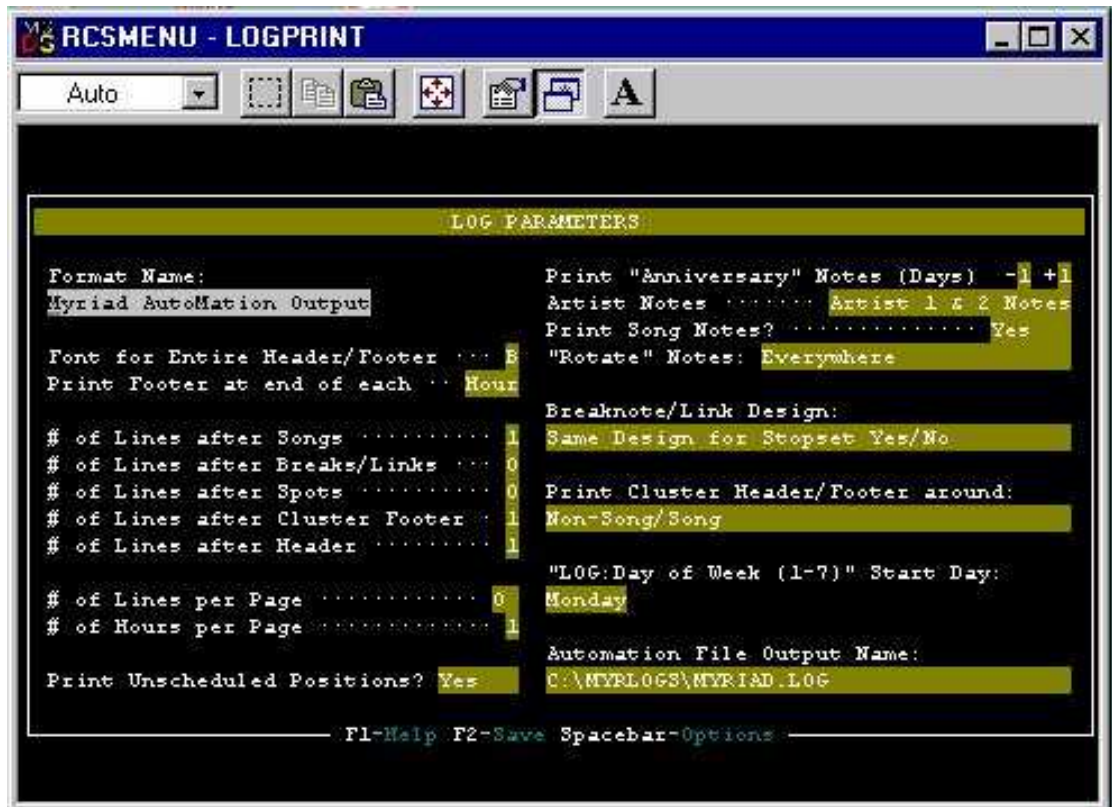
To do this, find the Song ID line that is located at the top of the list. You will note that the settings are set to Line=1 Column=2 Length=5 and Font=P (if is if the Length is different, that is OK but all the rest should be the same). To clear these settings, highlight the Song ID Line, press the right cursor to highlight the Line and press SPACE BAR to clear it. Do the same for Column, Length and Font.

You now need to find out exactly which field you are planning to use for the Myriad Cart Numbers, then scroll down to that field and put the same information in to that line.

In the example above, the Song ID has been cleared and the settings have been added to the Audio Digital Cart Number line so that in Selector the Myriad Cart Numbers will be read from the Digital Cart Number field.

For more information on the layout of this output document, please consult the LogImpprt.txt file that can be located on the Myriad Installation CD.

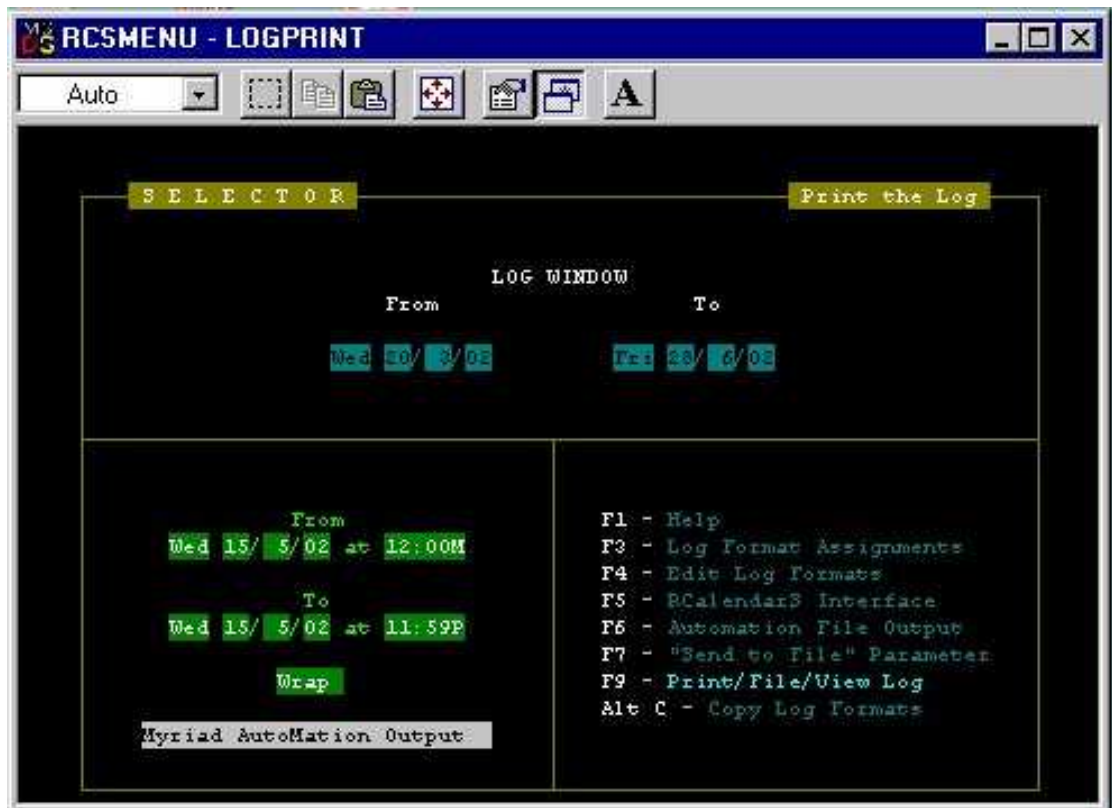
12. Press the F2 button to save the changes and then the ESCAPE key to return to the previous menu.
13. Next press the 5 key on the keyboard to enter the Log Parameters screen.



Press the tab button until the Automation File Output Name option is highlighted. Type in the file name and path of the output file that you want Selector produce. This location is the same as the location that the Log Import program uses to import the Selector log. Once you are happy, press F2 to save the settings and the ESCAPE to exit the window.

If you are using Myriad v2.6 or higher, you may wish configure Selector to output a single file for each day of the log. In which case, instead of calling the files Myriad.LOG (or similar) you need to call it @Y@M@D.LOG for the file name to contain the year, month and day.

14. Press the ESCAPE key again to return to the main Print The Log window.



15. Press the F6 key on the keyboard to enter the Automation File Output window.

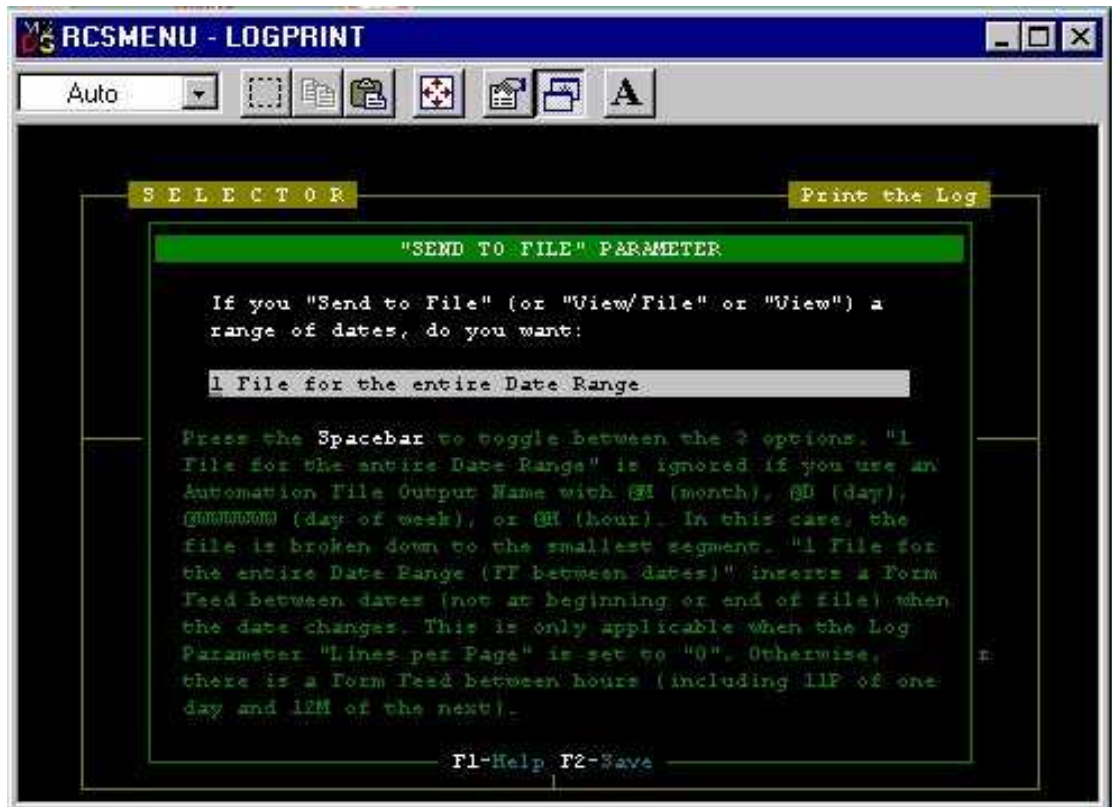


You need to put the same file name and location information in to the File Name option. Again, if you are using Myriad v2.6 or higher then you may

prefer to get Selector to output a separate file for each day in which case you need to ensure that the file name is @Y@M@D.LOG. In this case Selector will substitute it with the year, month and day so if it was creating a file for the 1st of May 2002 then the file name would be 020501.LOG.

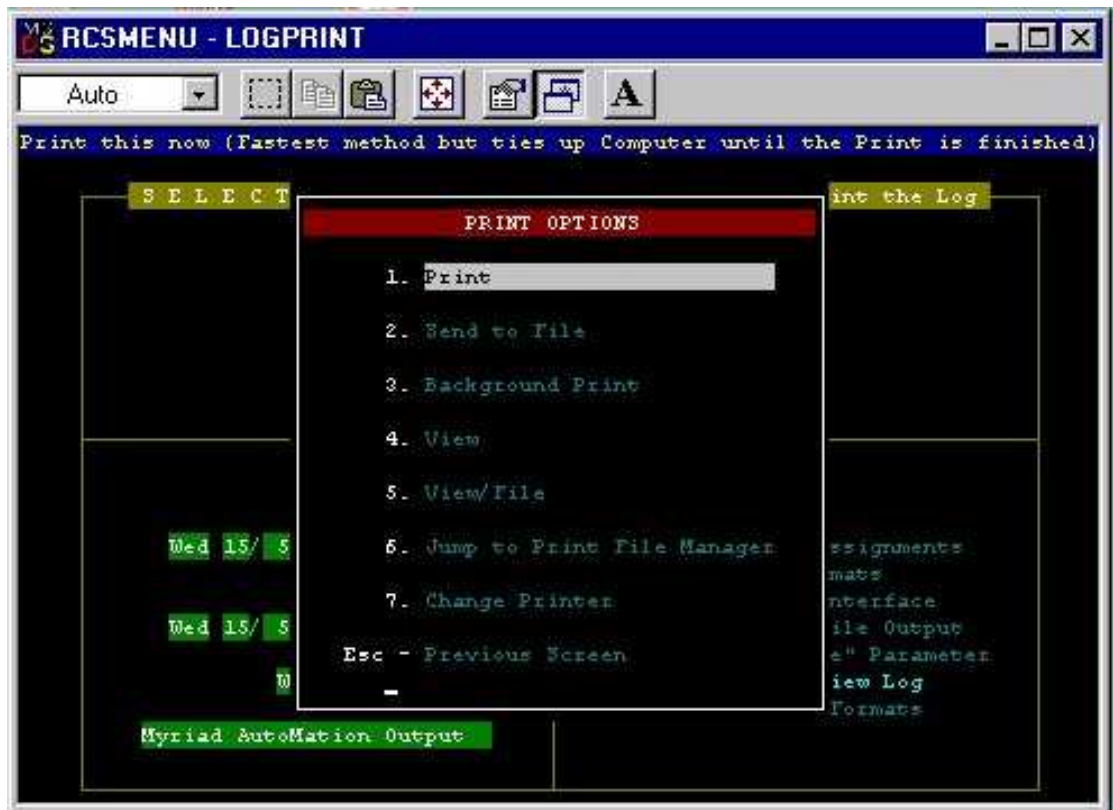
Once you have finished, press F2 to save your changes then ESCAPE to go back to the main Print The Log screen.

16. Press F7 to enter the "Send To File" Parameter screen.



Use the SPACE BAR to select whether you want to output one single file for the entire scheduled time and date range (i.e. Myriad.log) or a single file for each day in the range (i.e. @Y@M@D.log so you get 020501.log for the first of May 2002). Once you have selected the correct setting, press F2 to save the settings and ESCAPE to return to the main Print The Log menu.

17. That is it, Selector is now configured to output the scheduled log in a format and destination that Myriad can use. To actually do it, make sure the Myriad Automation Output is selected and the time and date range you want to output to Myriad is correct, then press the F9 key to enter the Print The Log menu.



Press 2 to select Send To File and follow the onscreen instructions. Selector will then generate the file(s) needed to import the Selector schedule in to Myriad. For more details on how to do this, please consult the Log Import Utility documentation.