

# Quick Guide To Setting Up Scoop Edit

Last Modified: 29/01/2002

This quick guide is intended to offer a simple walk-through of setting up a Scoop Edit workstation. It is assumed that you Scoop Capture system is already running, that there is a valid network connection between the intended Scoop Edit Workstation and the Scoop Capture PC and a general working knowledge of Windows™.

To take maximum advantage of Scoop's auto-configuration features, the following preparations to installing Scoop Edit are recommended.

Install and set up Scoop Capture

Ensure that a network path exists between Scoop Capture and Scoop Edit

Make a note of the network location of the Scoop Capture

If you have Myriad at your station, map the Myriad drive on the Scoop Edit PC

Install Cool Edit on the machine

These preparations will minimise the configuration needed to get Scoop Edit up and running.

## Installing Scoop Edit

Installing Scoop Edit is basically no more complicated than installing any other Windows™ program. If you have a CD, place it in the CD-ROM drive and the P Squared installer menu should appear on screen. Select *Scoop (Edit)* by clicking on the appropriate button to begin the installation process.

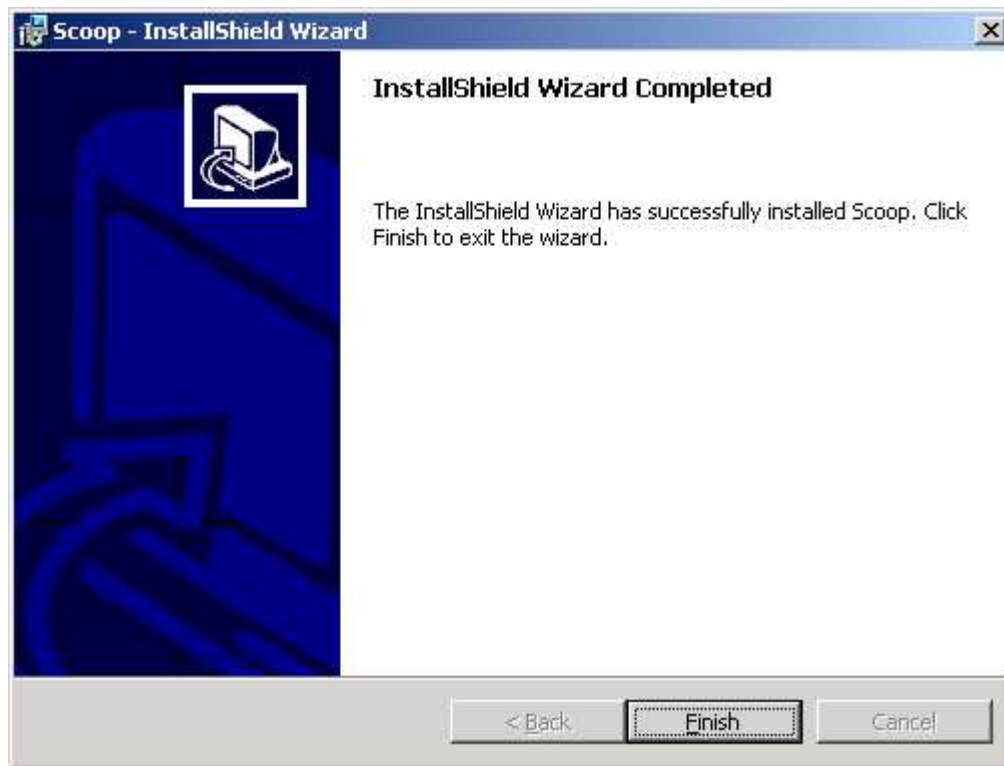


Alternatively, if you are installing from a network copy of the installation program, locate the setup.exe icon and double click on it to begin the installation process.

After a couple of seconds the installation process will begin to guide you through installing Scoop Edit.



Follow the simple 'on screen' instructions to complete the installation process. It is recommended that the *Complete Installation* is selected in the majority of installations as there are few optional components for Scoop.



Once the installer program has finished installing Scoop Edit, you are ready to begin configuring it.

### **Running Scoop Edit For The First Time**

Once Scoop Edit has been installed, an icon will automatically be added to the *Start bar* and the PC's *Desktop*. Double click on either of these icons to start Scoop Edit for the first time.

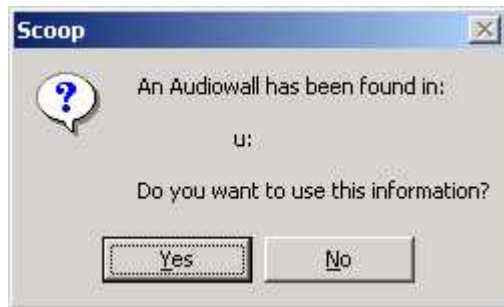


The first thing that will appear is the *License Details* screen that allows you to enter the *Licensee* name and *License Code* that were supplied by P Squared when purchased your system.

N.B. You will need a separate license for each Scoop Edit workstation that you want to install. For additional license codes, please contact the P Squared sales department.

After entering a valid *License Code*, you will be asked if you would like Scoop Edit to look for an existing Myriad Audio Wall to connect to. If you select *Yes* then Scoop Edit will look at all the network drives that are mapped to the PC, looking for an existing Myriad Audio Wall. If you have Myriad at your station and it is already set up then it should automatically connect.

If a Myriad Audio Wall is found then the location is displayed to allow you to confirm that it is the right place.



If it is the click on the *Yes* button, otherwise, click on the *No* button to select a new location.

N.B. If you do not have Myriad or do not want to have Scoop using the same Audio Wall as Myriad then select *No* when asked if you want to automatically search for an Audio Wall and enter in a new location in to the provided box.

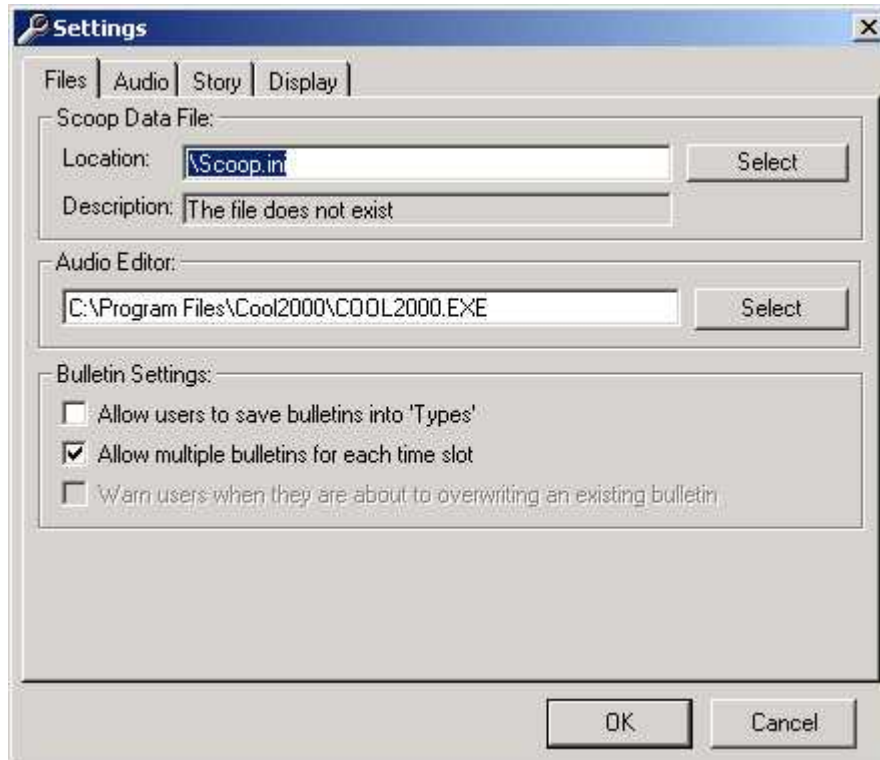


You either can specify one location for the entire for all of the audio stored on Scoop or a separate location for each 'chunk' of 1000 Carts used by the system.

N.B. Although you do not have to use the same settings as your Myriad system, each Scoop Edit Workstation should have the same settings for the Audio Wall Location.

If the location that you have specified does not exist, you will be asked to if you want it creating.

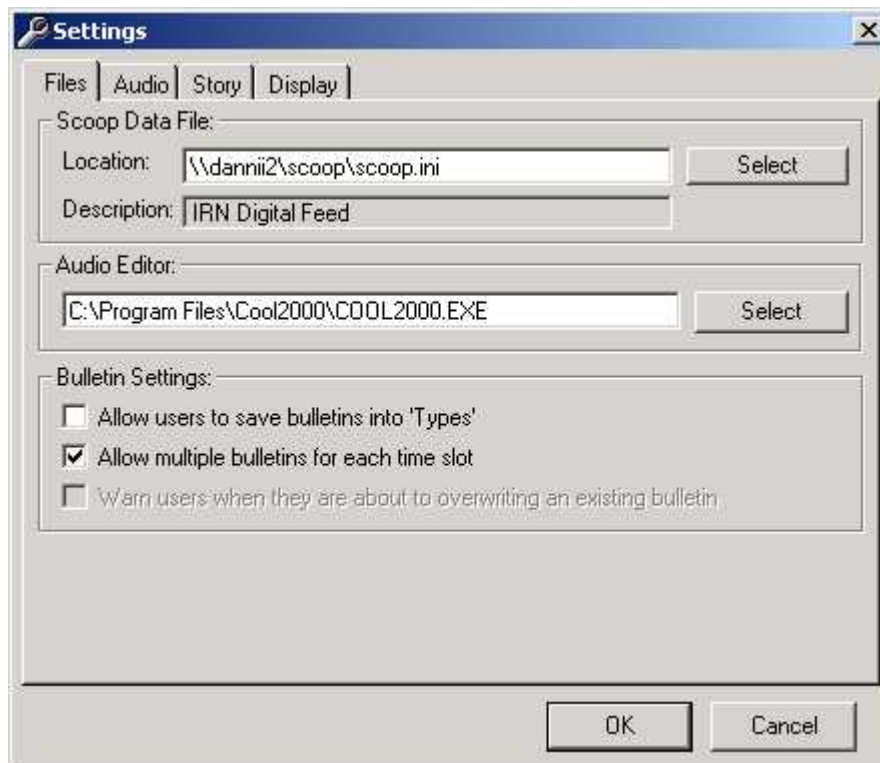
Next you will be asked to verify the location of the stories that are being captured by your Scoop Capture system.



### **Scoop Data Location**

The *Scoop Data Location* is the location where the stories are stored on the Scoop Capture PC. The *Scoop Data Location* also includes the format.ini files (scoop.ini is the most common file and is used for IRN satellite news) which contain the data about how Scoop Capture decodes a particular data source.

Use the select button to locate your Scoop Capture PC and select the Scoop.ini (assuming you are using IRN, for other services, contact P Squared) file. If the *Scoop Data Location* is valid, a description of the news service will appear in the *Description* window.



## Audio Editor

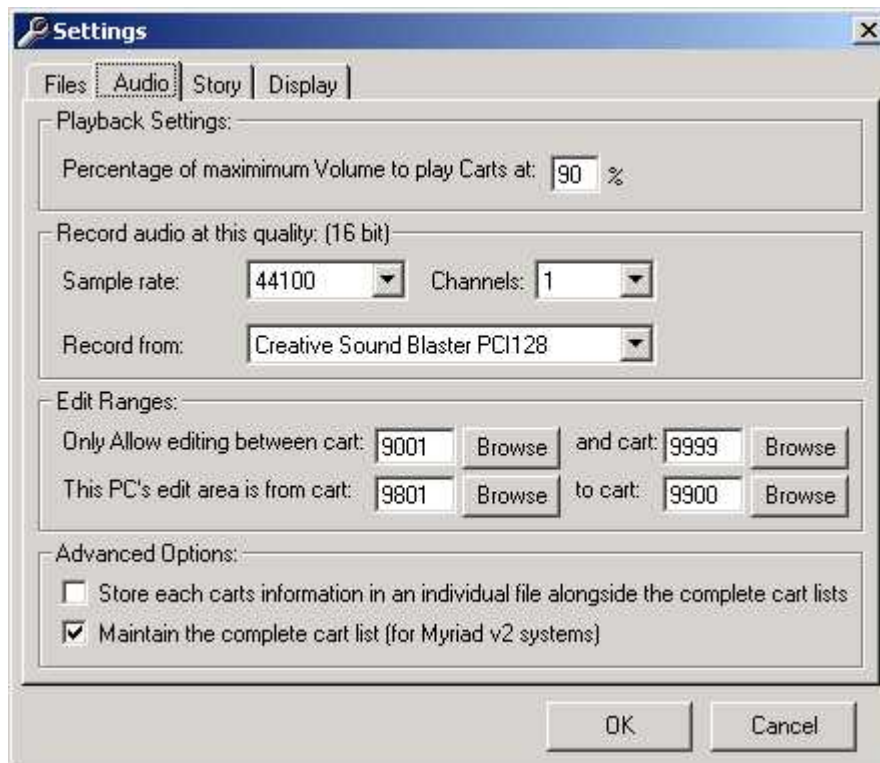
The *Audio Editor* section allows you to point Scoop Edit at your selected audio editor, which will be used to edit audio in Scoop Edit. This is usually Cool Edit but any standard Windows™ audio editor will work OK.

Scoop Edit will automatically fill in this setting for you if Cool Edit is set up on the PC prior to installing Scoop Edit.

The other settings on the screen can be accessed via the *Settings* menu in Scoop Edit and are covered in the standard documentation.

## The Audio Tab

Click on the *Audio* tab to check the audio settings that have been automatically configured by Scoop Server.



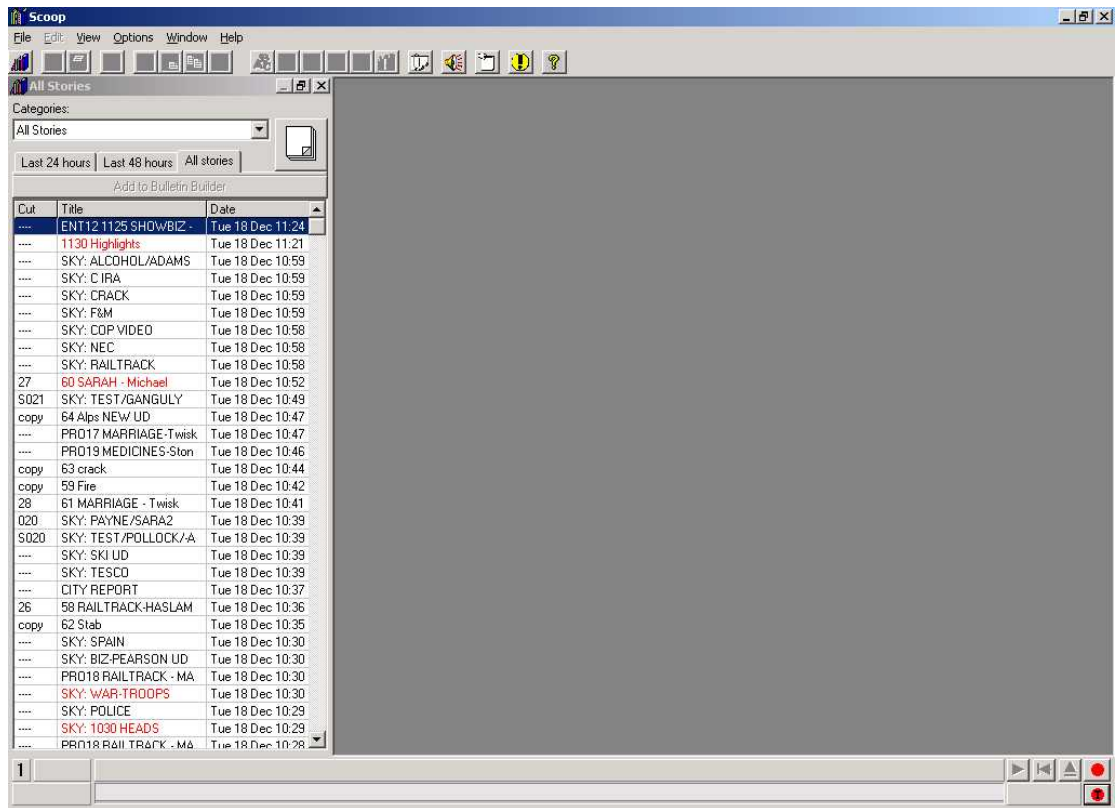
Most of these settings can be ignored at this stage, the only one that is worth checking is the *Edit Range* which dictates the range of Carts that Scoop as a whole can use and also the range of Carts that this particular Scoop Edit Workstation can use. Make sure that the default ranges will not affect your existing Myriad system (i.e. select a section of the audio wall that is not being used for voice tracking, production etc).

All of the other settings can be ignored at this stage, click on the *OK* button to continue to run Scoop Edit for the first time.

### **That's It!**

All of the other settings are auto-configured to their most common settings and Scoop Edit should start up as normal.





For more details on using Scoop Edit and configuring the system, please refer to the Scoop Edit main documentation or contact [support@psquared.net](mailto:support@psquared.net)