

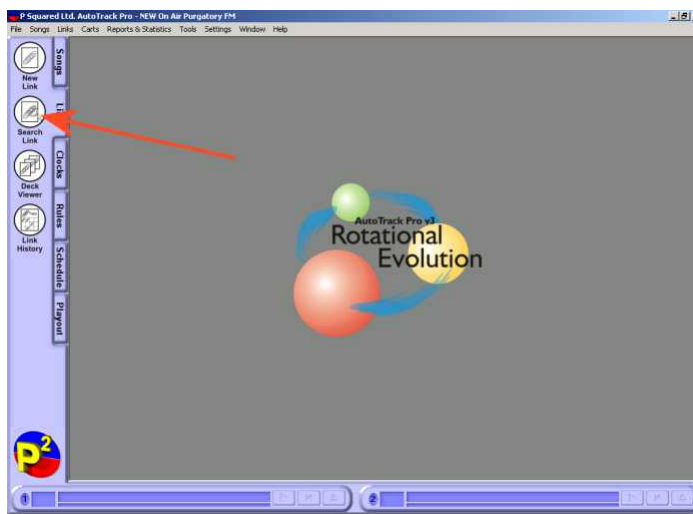
Autotrack Pro – Quick Guide to Adding a Link

Songs and Links form the fundamental basis for scheduling in AutoTrack Pro. Songs are basically the music, Links are any other scheduled items that do not fit under the broad heading of Songs.

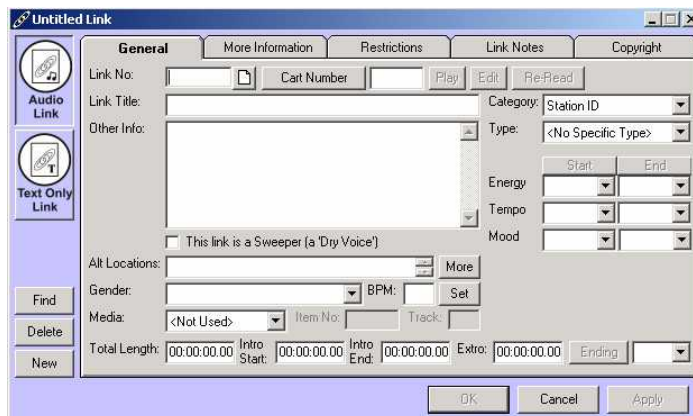
One of the things you will most commonly do in Autotrack Pro, will be to add a song or link.

To add a link:

Click on *New Link* on the *Links* tab on the main screen of Autotrack Pro.



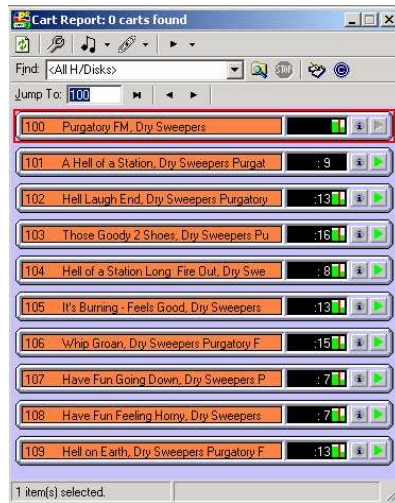
This will bring up a blank link card:



Autotrack Pro will automatically assign a link number to this card. It will add in this information once you have clicked OK and saved the link card.

The Cart Number is what your audio is saved as in your playout system. If you are using Myriad as your playout system you can click on **Cart Number** which will bring up your cart report, you can search for a particular link or type in the cart number in

the *jump to section* . You can then double click on any cart that you are wanting to import into the links collection.

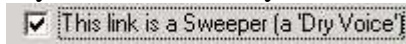


If you have entered the Link name and artist on your Myriad Audiowall you will not need to type these details again on the song card as it will copy them across for you.

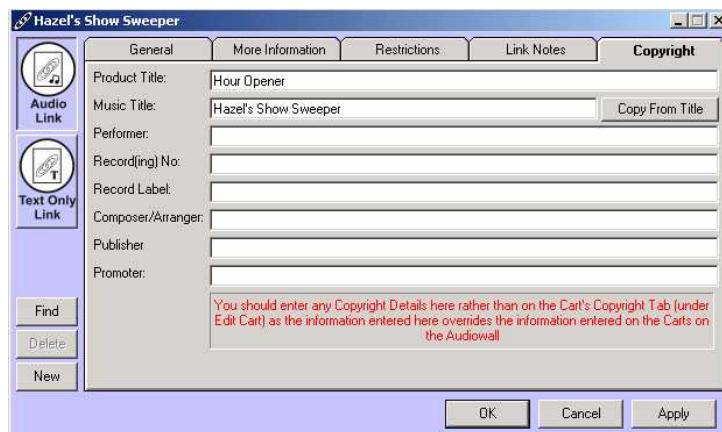
Fill in the *Category, Type, Gender, Energy, Tempo,* and *Mood* if you have them set up. If you haven't and would like more information on them, see the Autotrack Pro manual for more details.

If you are using Myriad and your link is a dry sweeper or voice link you can have Autotrack Pro tell Myriad it can play this link over the top of a song to time it perfectly up to the introduction of a song (* Depending on if you have set the introductions correctly on your song)

If you would like Myriad to do this you need to make sure the box is ticked next to



To add in copyright information for this audio click on the Copyright tab on the link card.



You have now entered all the details you need in order for your audio to be scheduled. If you want a more detailed view on what each section means on the link card see the Autotrack Pro manual.