

Importing Songs From Selector In To AutoTrack Pro

Exporting From Selector

Copy the provided file (12REP25.RCS) in to your selector database folder (maybe c:\rsc\sel\MYSTATION). It has to be the folder that is your active database and should not overwrite any files (if it does then do not proceed and ring P Squared for alternate instructions).

Once copied, run selector as normal and go to the Reports section. Scroll down and you should see AutoTrack Export at number 25. Highlight this and press F5 (input options) and choose Selected Category / Levels. You can then select the song categories and levels that you want to include. Exclude jingles etc at this stage (we will worry about them later).

Hit ESC to get back to the main menu and then F9 (Print / File) and then select Send To File (option 2).

This will take you back to the reports screen. Press F9 again and then select Jump to Print Manager (option 6 I think). Make sure that the report you have just run in highlighted and then press F4 to Copy. This opens a non-descript grey box at the bottom of the screen. Type c:\rcsdata.txt and then press enter.

You can now close or minimize Selector and if you look in the root of C drive, the rcsdata.txt file should be there, this is the file that AutoTrack Pro will import.

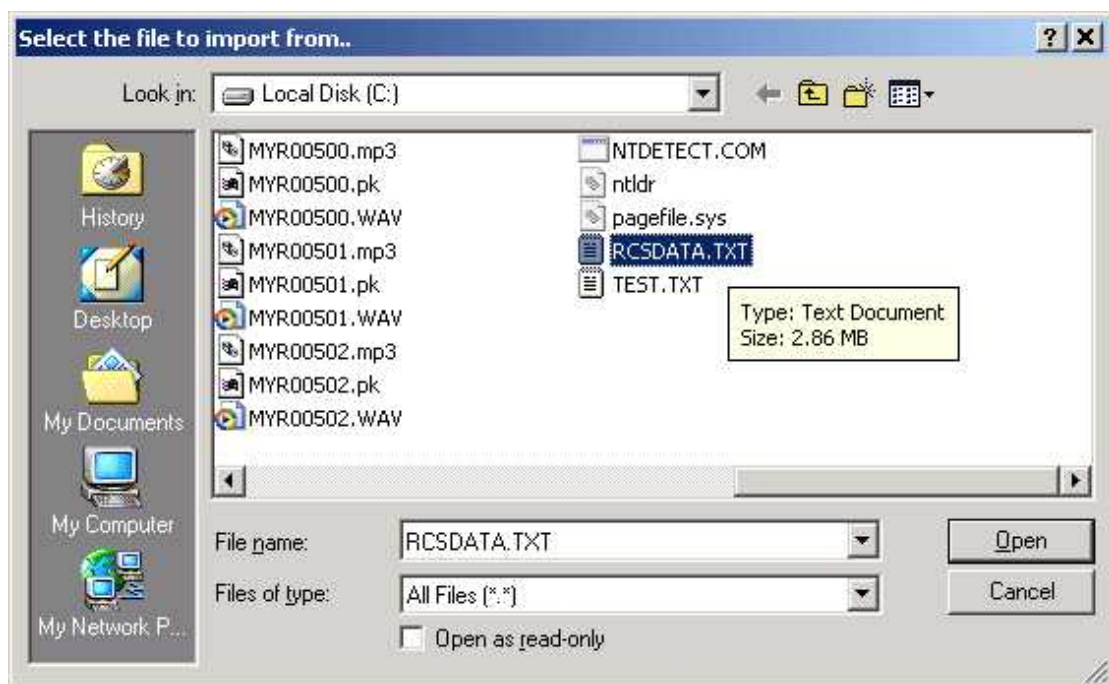
Importing In To AutoTrack Pro

Run AutoTrack Pro and use the Change Working Database option on the file menu to ensure that you have selected the database that you want to import your Songs in to. If you are running AutoTrack Pro for the first time then a blank database will automatically be created but you may have to enter an 'enabler code' in order to open the database (these are provided by P squared).

Click on the File menu and expand the 'Import/Upgrade/Restore' menu. Next select the 'Import From Other Scheduler's Exported Reports' option and final highlight 'Import Songs'.



You can now select the file that we just exported from selector using the 'explorer' window that opens.



Click on Open and all of your Songs from Selector will be imported in to AutoTrack Pro.